



National Pallet Program



Filtrex National Pallet Program Retail Price List

Common applications for Filtrex FilterSoxx:

SiltSoxx

- Perimeter Control

DitchChexx

- Check Dams

InletSoxx

- Catch Basin Protection

Slope Interruption Soxx

- Effective Slope Length Reduction

Filter Rings

- Concrete Washouts



let nature do it.

PO. Box 28065 North Park Plaza
Brantford, ON N3L 3E1
P: 519-753-0324
F: 519-753-9846
info@filtrex.ca
www.filtrex.ca

Simple. Proven. Green...and on Pallets.

Available to: Distributors, Suppliers, Contractors, Excavators, & Builders
Effective 02/01/2013



Filtrex™ FilterSoxx™ Pallet Pricing

SiltSoxx™ Diameter	Length (Continuous)	Use	MSRP
8-inch GREEN w/ Black Stripe	48 metres per pallet	Perimeter Control / Inlet Protection	
12-inch GREEN w/ Black Stripe	30 metres per pallet	Perimeter Control / Check Dams	
18-inch GREEN w/ Black Stripe	15 metres per pallet	Perimeter Control / Check Dams	

Note: - Pricing is subject to change without notice. - All Pricing F.O.B. Delivery is extra, call for pricing. - HST is not included in above pricing.

Filtrex FilterSoxx are a superior approved alternative to the following products for your design or construction project:

- Silt Fence
- Straw Bales
- Straw Wattles
- Coir Logs
- Rock Check Dams

Ask about FilterSoxx prefilled with Filtrex Pollutant Removal Additives for the removal of harmful chemicals and pollutants from your storm water runoff.

PetroLoxx – Hydrocarbon Removal

MetalLoxx – Heavy Metals Removal

NutriLoxx – Phosphorus and Nitrogen Removal

BactoLoxx – Bacteria and E.coli Removal





SiltSoxx™

Perimeter Control

Slope Protection

Winter and Asphalt
Installations
No Trenching Required



DitchChexx™

Check Dams

DitchChexx are easily cut
to length and installed to fit any
drainage ditch or swale



Slope Interruption

Soxx

Effectively Reduction Slope
Lengths and Runoff Velocities



InletSoxx Catch Basin Protection



Filter Ring Concrete Washouts





Vegetated FilterSoxx Systems



Appleby Creek Re-alignment Burlington, ON



Site: Appleby Creek Realignment,
Burlington, ON

Client: Namasco
Engineer: Parish Geomorphic,
Philips

Details: Installation of FiltrexTM
EdgeSaverTM for Bank
Stabilization

Method: 18" FilterSoxxTM filled with
FilterMediaTM, GrowthMediaTM
injected with Floodplains Mix and
cover crop, and 3/4" Clear Stone. The
EdgeSaverTM was secured using
lockdown netting and planted with
Dogwood and Willow Live Stakes.

Installation
March, 2005



Burlington ON – EdgeSaver

Installation
March, 2005



Burlington ON – EdgeSaver

Installation
March, 2005



Burlington ON – EdgeSaver

10 Months After
Installation



Burlington ON – EdgeSaver

2 Years After
Installation



Burlington ON – EdgeSaver

2 Years After
Installation



Burlington ON – EdgeSaver

CSO Tank Installation Hamilton, ON



Site: Stroud Road
Hamilton, ON

G.C.: Genivar Construction
Owner: City of Hamilton

Details: Installation of Filtrexx™
Living Wall™ Hybrid

Method:
18" FilterSoxx™ filled with
GrowthMedia™ injected with
Wildflower Mix and cover crop. The
Living Wall™ was secured using
Geogrid installed into straight shale
on both side slopes.

Installation
July, 2007



CSO Tank – Hamilton, ON

Installation
July, 2007



CSO Tank – Hamilton, ON

2 Months After
Installation



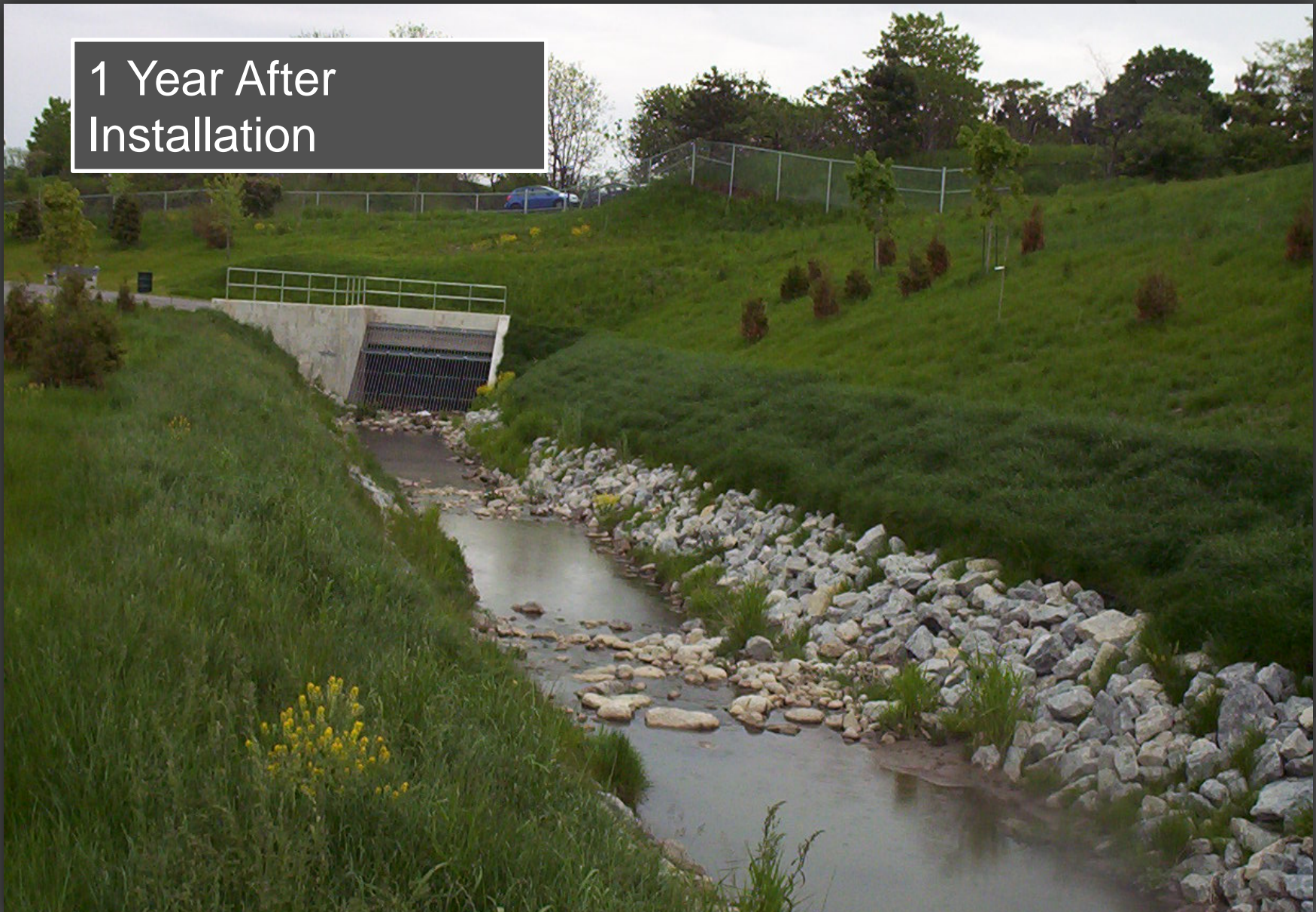
CSO Tank – Hamilton, ON

1 Year After
Installation



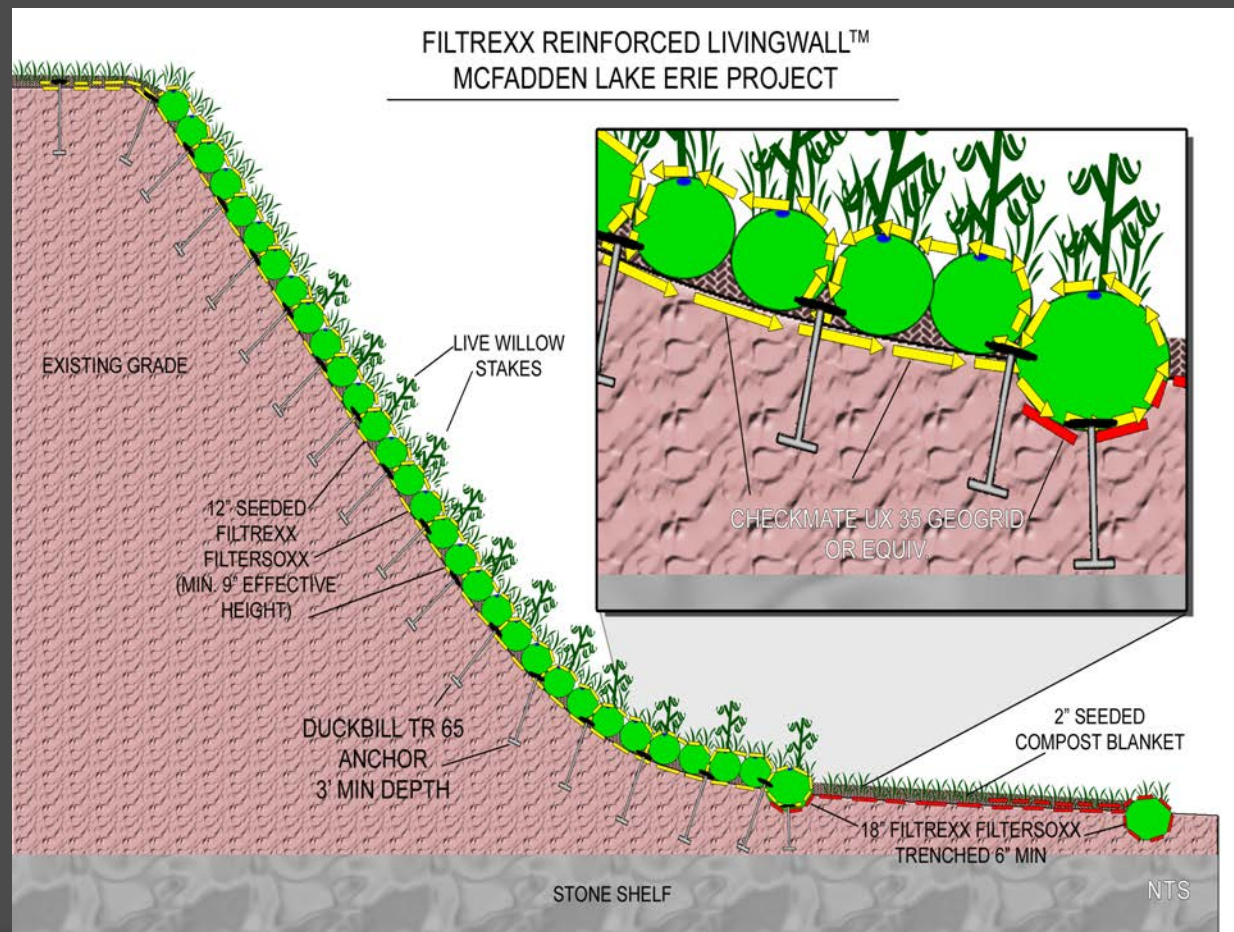
CSO Tank – Hamilton, ON

1 Year After
Installation



CSO Tank – Hamilton, ON

McFadden Residence Lake Erie





McFadden Lake Erie Project



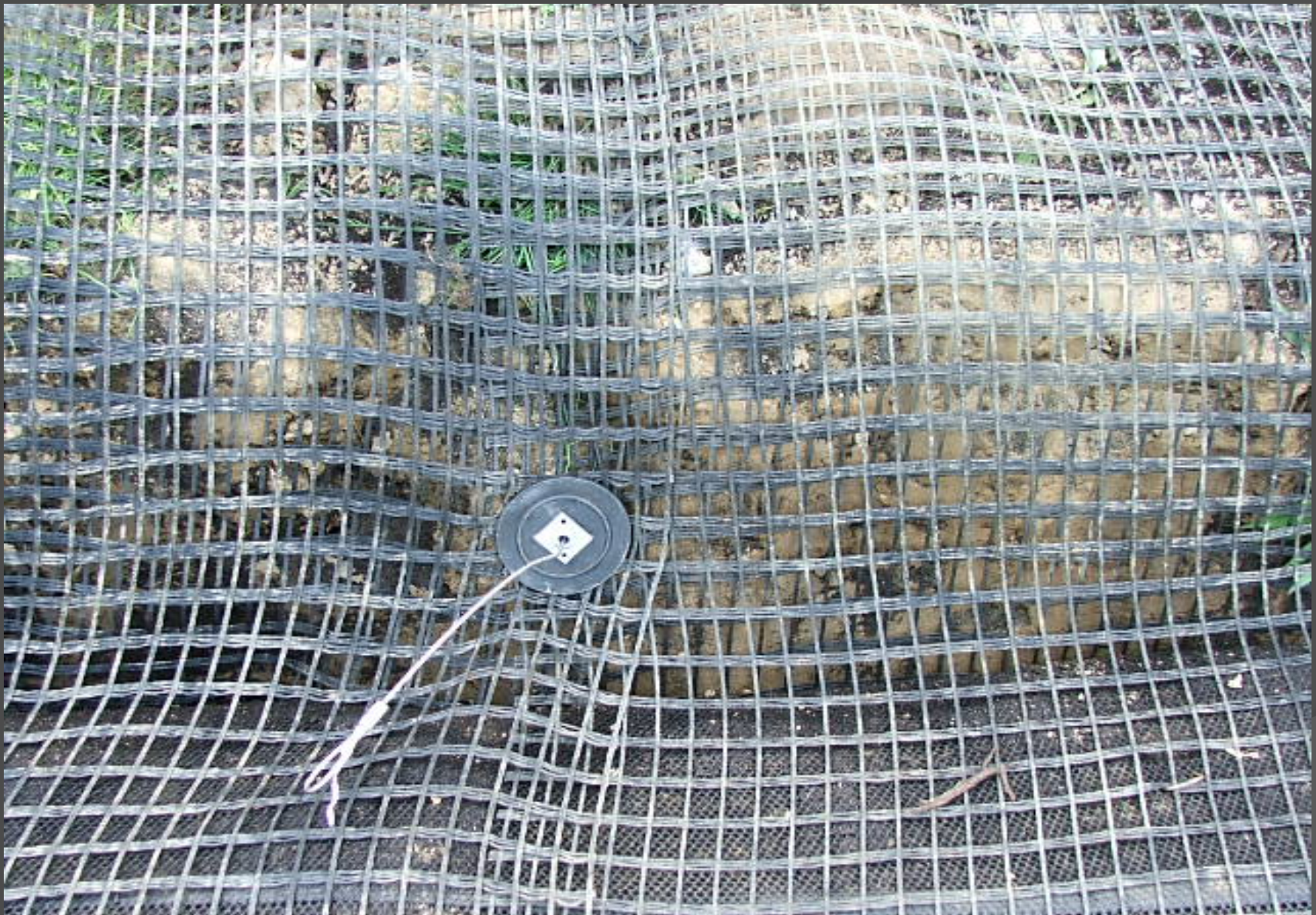
McFadden Lake Erie Project



McFadden Lake Erie Project



McFadden Lake Erie Project



McFadden Lake Erie Project



McFadden Lake Erie Project



McFadden Lake Erie Project

Headwall Installation Halton Hills, ON



Site: 10th Line, Glen Williams
Halton Hills, ON

G.C.: Aecon
Owner:

Details: Installation of a Filtrex
MSE Living Wall™
(Mechanically Stabilized
Earth) as a Headwall

Method: 18" FilterSoxx™ filled with
GrowthMedia™ injected with
Wildflower Mix and cover crop. The
Headwall was secured using Geogrid
wrapped around the FilterSoxx™ and
installed into the backfill and
compacted.

Installation
September, 2007



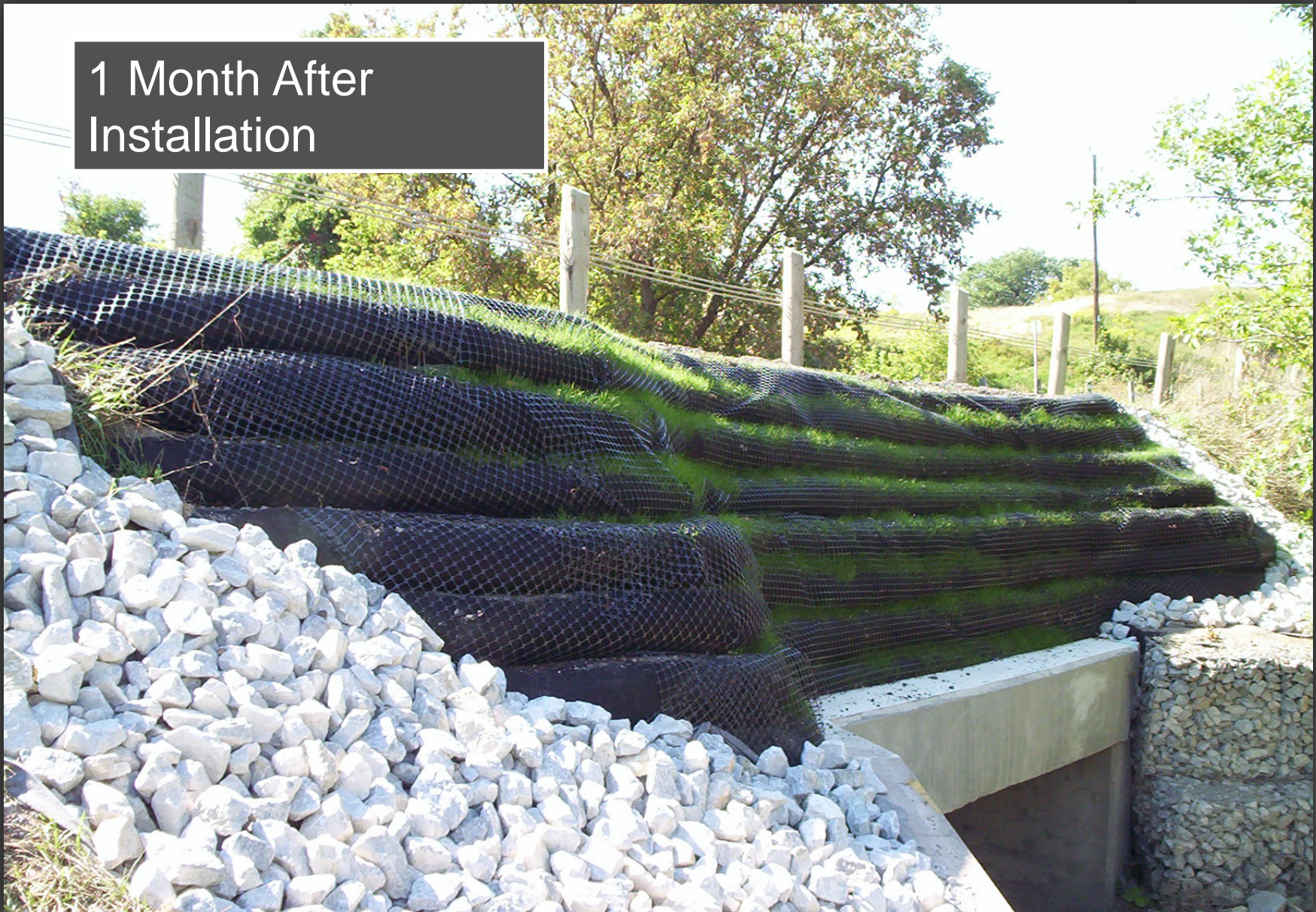
MSE Wall – Halton Hills, ON

Installation
September, 2007



MSE Wall – Halton Hills, ON

1 Month After
Installation



MSE Wall – Halton Hills, ON

1 Month After
Installation



MSE Wall – Halton Hills, ON

Filtrex MSE Living Wall Collingwood, ON



Site: Collingwood, Ontario

G.C.: Van Ryn Landscaping
Owner: Residential

Details: Installation of a Filtrex MSE Living Wall™ (Mechanically Stabilized Earth)

Method: 18" FilterSoxx™ filled with GrowthMedia™ injected with Tall Fescue Mix and cover crop. The Headwall was secured using Geogrid wrapped around the FilterSoxx™ and installed into the backfill and compacted.

Existing Site Conditions



Filtrex MSE Living Wall – Collingwood, ON

Installation – 2010



Filtrex MSE Living Wall – Collingwood, ON

Installation – 2010



Filtrex MSE Living Wall – Collingwood, ON

Installation – 2010



Filtrex MSE Living Wall – Collingwood, ON

Installation – 2010



Filtrexx MSE Living Wall – Collingwood, ON

1 Year After
Installation



Filtrex MSE Living Wall – Collingwood, ON

1 Year After
Installation



Filtrexx MSE Living Wall – Collingwood, ON

Millenium Trail Creek Port Perry, ON



Site: Baagwating Park
Port Perry, ON

Client: Ecological Outlook
Engineer: Jean-Marc Daigle

Details: Cleaning and cooling
water from outfall pipe
into Lake Scugog.

Innovative Solution:
5 Types of integrated Green Solutions:
Green Gabions, GrowthMedia™ Blanket,
Coir Mat, Live Staking, and Vegetated
FilterSoxx™.

Installation in
December 2003



Lake Scugog Storm Outfall – Port Perry, ON

Installation in
December 2003



Lake Scugog Storm Outfall – Port Perry, ON

Installation in
December 2003



Lake Scugog Storm Outfall – Port Perry, ON

Installation in
December 2003



Lake Scugog Storm Outfall – Port Perry, ON

Fully Vegetated
July 08, 2006



Lake Scugog Storm Outfall – Port Perry, ON

Fully Vegetated
July 08, 2006



Lake Scugog Storm Outfall – Port Perry, ON

Fully Vegetated
July 08, 2006



Lake Scugog Storm Outfall – Port Perry, ON

**Roseland
Stream Naturalization and
Habitat Creation
using FilterSoxx™**





Stream Naturalization and Habitat Creation - Roseland



Stream Naturalization and Habitat Creation - Roseland



Stream Naturalization and Habitat Creation - Roseland



Stream Naturalization and Habitat Creation - Roseland



Stream Naturalization and Habitat Creation - Roseland



Please contact us to harness
nature for greening your next
project!

1-888-841-4077

info@filtrex.ca